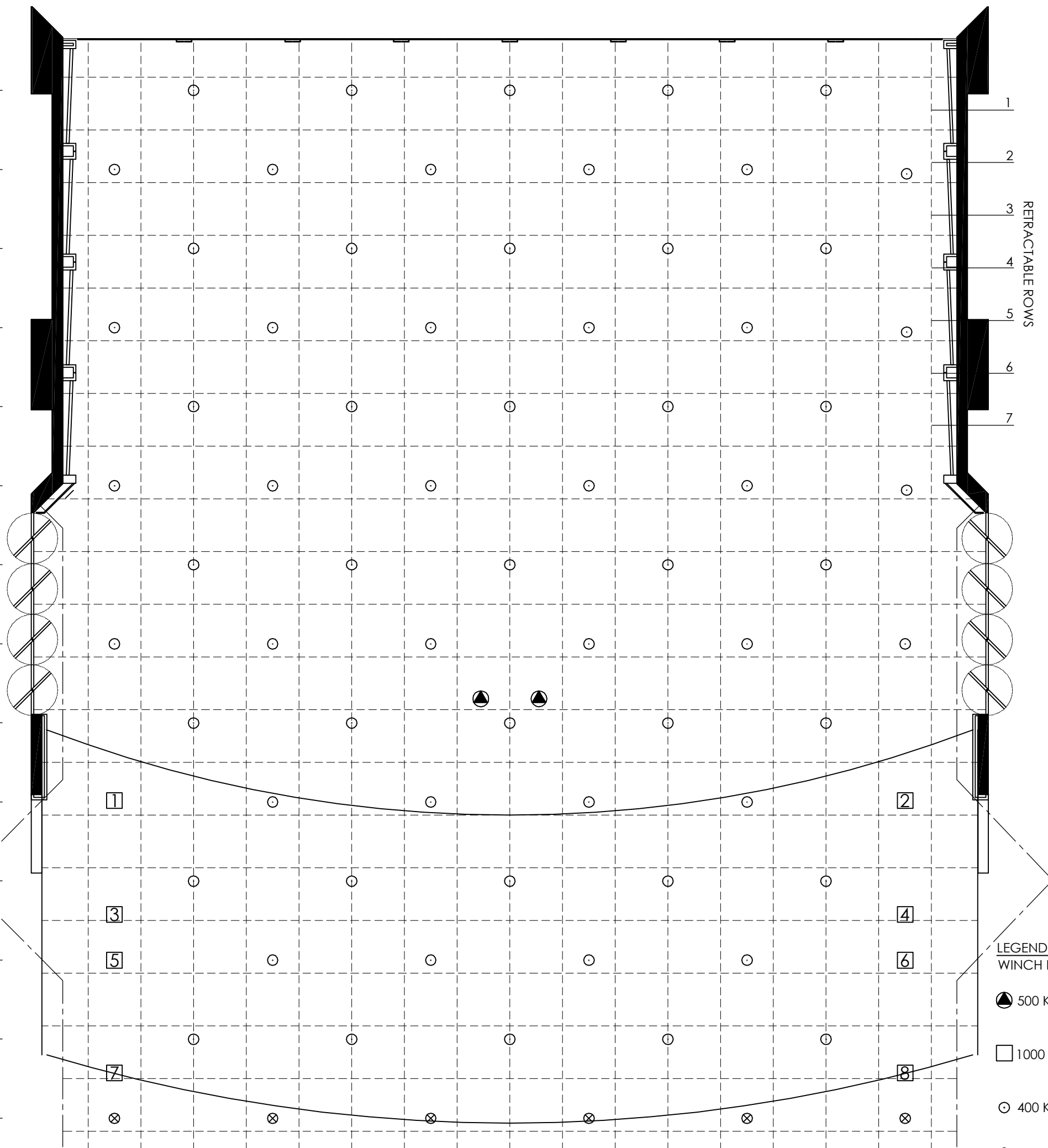


z:\p01\qpac\_shared\AutoCAD\Zone 500 Concert Hall\018 Events\100 Plans-Elevations\170409-500-q018-100 Concert Hall-Platform Reflected Hoist Penetrations.dwg, 6/05/2009 2:43:37 PM, A3 (297 x 420 mm)

- BANK 10  
101 - 105
- BANK 09  
91 - 96
- BANK 08  
81 - 85
- BANK 07  
71 - 76
- BANK 06  
61 - 65
- BANK 05  
51 - 56
- BANK 04  
41 - 45
- BANK 03  
31 - 36
- BANK 02  
21 - 25
- BANK 01  
12 - 15
- BANK FOH 01  
111 - 115
- BANK FOH 02  
122 - 125
- BANK FOH 03  
131 - 135
- BANK FOH 04  
NO BAND HOIST LIFT POINTS AVAILABLE



- LEGEND:**
- ◉ 400 KG WLL STEEL BAND HOIST
  - ◐ 500 KG WLL CHAIN HOIST
  - ◻ 1000 KG WLL CHAIN HOIST (1-8)
  - ⊗ LIFT POINT (NO BAND HOIST)

# QPAC

Queensland Performing Arts Centre

**DRAWING TITLE**  
LEVEL: L0  
CONCERT HALL  
PLATFORM PLAN  
REFLECTED HOIST PENETRATIONS

**DRAWING NUMBER:**  
170409-500-q018-100.02

**DRAWN BY:** MIB    **DATE:** 17.04.09  
**SHEET SIZE:** A3    **DRAWING SCALE:** NTS  
 SHEET 2 of 2

THIS DRAWING IS COPYRIGHT AND REMAINS THE PROPERTY OF THE QUEENSLAND PERFORMING ARTS CENTRE. THIS DRAWING IS ISSUED IN CONFIDENCE, AND MAY NOT BE ALTERED, COPIED, TRANSFERRED, SOLD OR OTHERWISE DISCLOSED WITHOUT WRITTEN PERMISSION FROM THE QUEENSLAND PERFORMING ARTS TRUST.

[www.qpac.com.au](http://www.qpac.com.au)